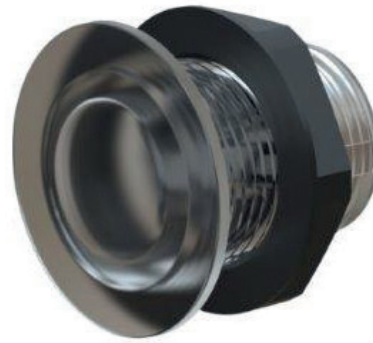




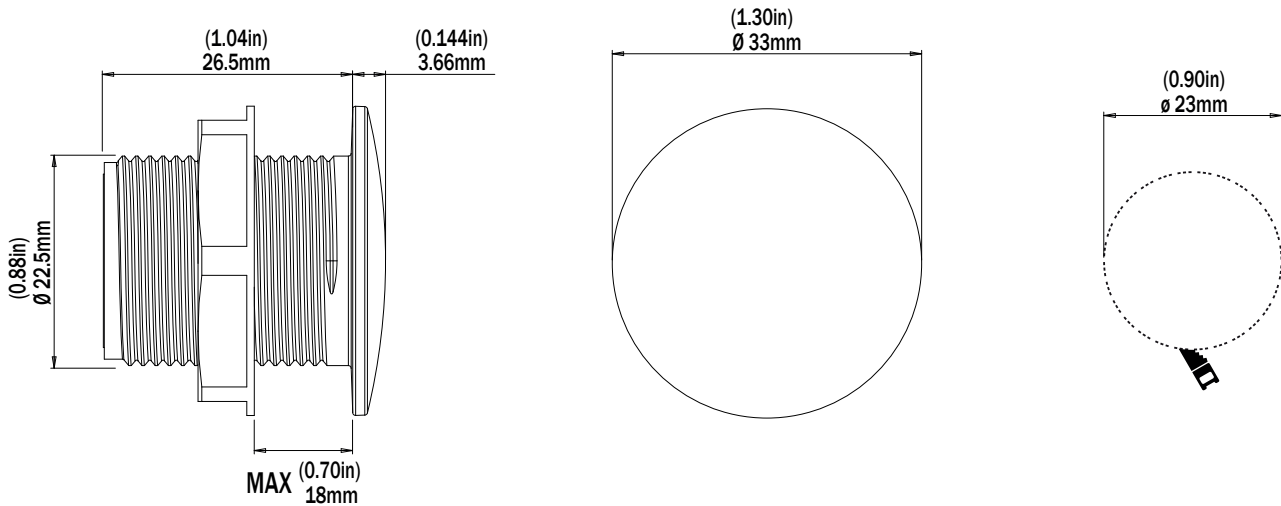
eclipse

ECLIPSE Courtesy Light - White

CL30



| PART DESCRIPTION | CL30 ECLIPSE COURTESY LIGHT |
|--------------------------|--|
| Part Number | 60-0479 - ECLIPSE Courtesy Light CL30 White (5000 K) |
| Available Colors | White (5000 K) |
| LED Type | 3 x 0.5W White LEDs |
| Fixture Lumens | 45 |
| Warranty | 3 Years |
| Customer Control Options | On/Off Switch ECLIPSE Command Center |
| Electrical Installation | Simple 2 Wire Installation |



| TECHNICAL | |
|-------------------------------------|---------------------------|
| Driver | Internal Driver |
| Supply Voltage Range | 12V DC Only (10 - 15V DC) |
| Max Current Draw (12V DC) | 0.1A |
| Surge Protection | Yes |
| Low Voltage Protection | Yes |
| Auto Power Control | Yes |
| “Soft Start” Electronics Protection | Yes |
| Reverse Polarity Protection | Yes |
| In Rush Current Protection | Yes |
| Power Line Noise Suppression | Yes |
| ISO 8846 (Ignition Protection) | Yes |

| PHYSICAL | |
|---------------------------|---|
| Ingress Protection | IP68 |
| Front Diameter (Bezel) | 33mm (1.3") |
| Profile | 3.66mm (1.44") |
| Depth | 30.0mm (1.180") |
| Hole Diameter for Fitting | 23.0mm (1.0") |
| Construction | Clear PC Body |
| Mechanical Installation | Bulkhead Panel Mount (with marine adhesive) |
| Weight | 34g (1.2 oz) |
| Installation Location | Outdoor / Partially Covered Areas / Indoor |

| ACCESSORIES | |
|--------------------------------|---------|
| ECLIPSE Command Center | 60-0495 |
| Expansion Module (Single Zone) | 60-0496 |
| Expansion Module (Double Zone) | 60-0497 |

| LIGHTING SYSTEM FUNCTIONALITY (ON/OFF SWITCH) | |
|---|-----|
| On/Off Control | Yes |
| Dimming Control | Yes |

| LIGHTING SYSTEM FUNCTIONALITY (ECLIPSE COMMAND CENTER) | |
|--|-----|
| <i>From Smart Device/MFD:</i> | |
| On/Off Control | Yes |
| Dimming Control | Yes |
| Zone Control | Yes |
| <i>From Momentary Switch (Optional):</i> | |
| On/Off Control | Yes |
| Dimming Control | Yes |