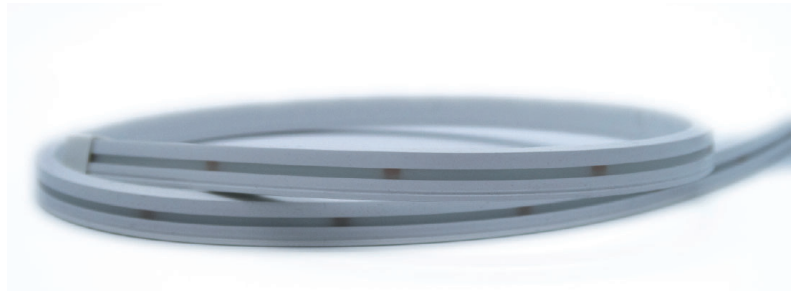




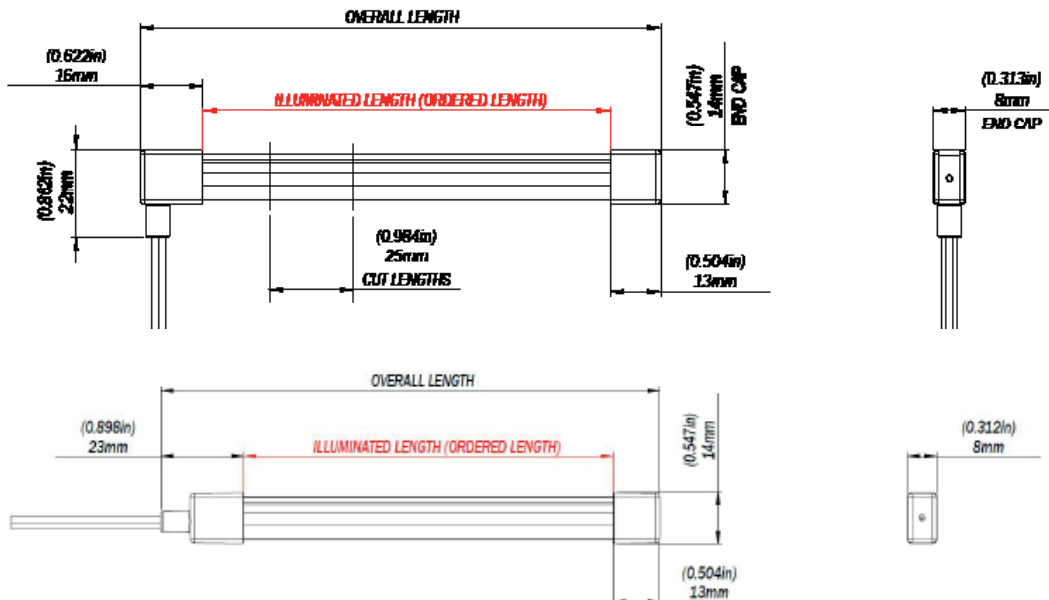
# eclipse

## ECLIPSE Neon Flex - White

# SNL100



PART DESCRIPTION	SL100 ECLIPSE NEON FLEX
Part Number	60-0512-1000 - ECLIPSE Neon Flex SNL100 - White (1m) 60-0512-2500 - ECLIPSE Neon Flex SNL100 - White (2.5m) 60-0512-5000 - ECLIPSE Neon Flex SNL100 - White (5m)
Available Colors	White (5000 K)
LED Type/Density	60 White LEDs Per Meter
Warranty	3 Years
Customer Control Options	On/Off Switch ECLIPSE Command Center
Mechanical Installation	Cut to Length (Seal before Installation) Bottom or Side Cable Entry Option (Fit and Seal Before Installation)
Electrical Installation	Simple 2 Wire Installation



EMEA: [Info@Lumishore.com](mailto:Info@Lumishore.com) | USA: [Sales@LumishoreUSA.com](mailto:Sales@LumishoreUSA.com)

Units 11 & 12, Ashmount Business Park, Upper Fforest Way, Swansea, SA6 8QR | 7137 24th Court East, Sarasota, FL 34243, USA

**ECLIPSE - White**  
**SNL100**

NEON FLEX STRIP LIGHT



**TECHNICAL**

Supply Voltage Range	12V DC Only (10 - 15V DC)
Max Current Draw Per Meter (12V DC)	0.5A (6W/m)

**PHYSICAL**

Ingress Protection	IP68
Illuminated Cross Section	12.0mm x 6.1mm (0.433" x 0.240")
End Cap Dimensions	14.0mm x 8.0mm (0.551" x 0.314")
Lengths Available	1m, 2.5m and 5m 39", 98" and 196" (Cut and Seal)
Construction	Fully Encapsulated and Potted with Spot Free Diffuser
Mechanical Installation	Cut to Length and Seal before Install. Cut in 25mm Steps. Stainless Steel Screw Clips for Mounting.
Weight Per M (yd)	86g (3 oz)
UV Resistant	Yes
Salt Spray Tested	Yes
Installation Location	Outdoor / Partially Covered Areas / Indoor

**ACCESSORIES**

ECLIPSE Command Center	60-0495
Expansion Module (Single Zone)	60-0496
Expansion Module (Double Zone)	60-0497
Stainless Steel Clips	60-0514

**LIGHTING SYSTEM FUNCTIONALITY (ON/OFF SWITCH)**

On/Off Control	Yes
Dimming Control	No

**LIGHTING SYSTEM FUNCTIONALITY (ECLIPSE COMMAND CENTER)**

*From Smart Device/MFD:*

On/Off Control	Yes
Dimming Control	Yes
Zone Control	Yes

*From Momentary Switch (Optional):*

On/Off Control	Yes
Dimming Control	Yes