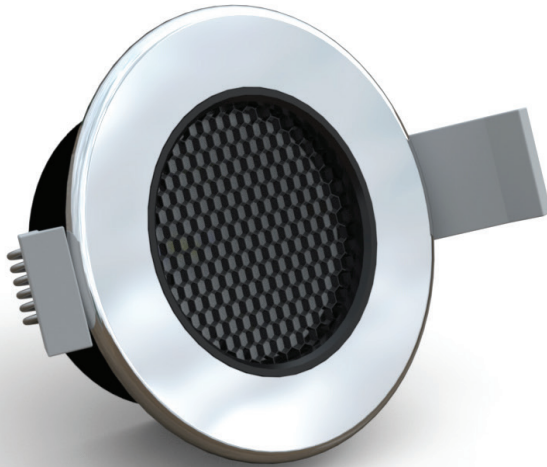


LUX Downlight DL65 AG Installation Guide

Full spectrum color tuneable lighting, including cold and warm white light

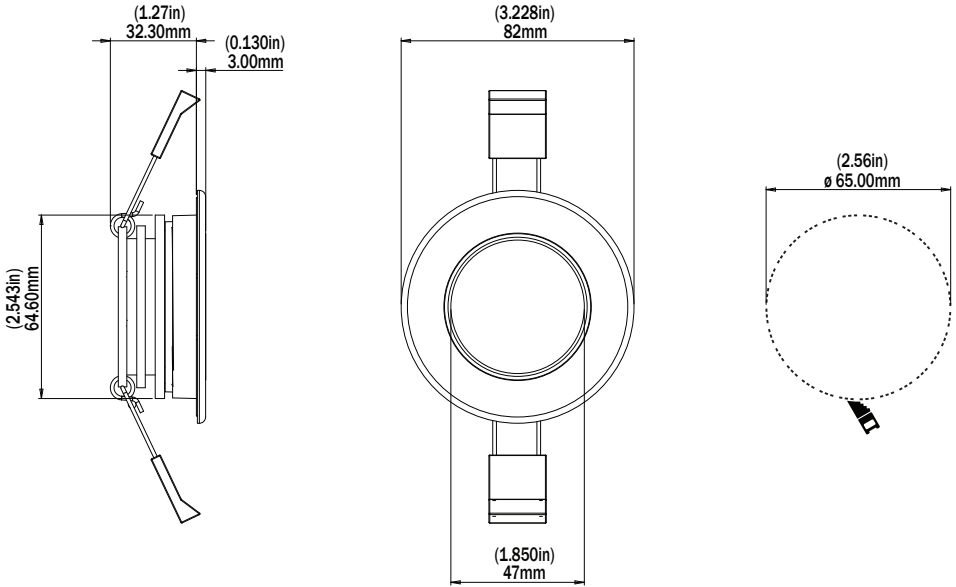
Please read the following pages before attempting installation



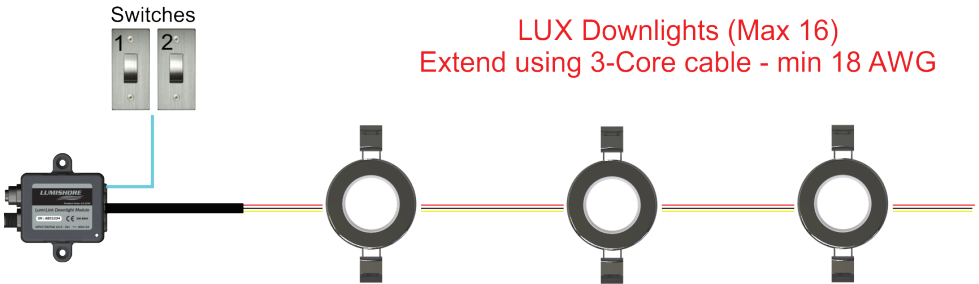
Before you start...

- Always ensure that the vessel's power source and battery are disconnected or isolated prior to installation.
- A qualified professional should carry out both the electrical and mechanical installation.
- The LUX Downlight DL65 AG is designed to be used in conjunction with the Lumishore Lux Downlight module (see diagram below). Do not connect to any other 3rd party lighting control products or dimmers.
- The LUX Downlight DL65 AG is for indoor use ONLY.
- Choose a location – the light must be mounted on a flat – not curved surface.
- The rear of the light may get warm to touch, it will not cause damage to the mounting surface.

Basic Dimensions:



Installation Diagram



LUX Downlights (Max 16)
Extend using 3-Core cable - min 18 AWG

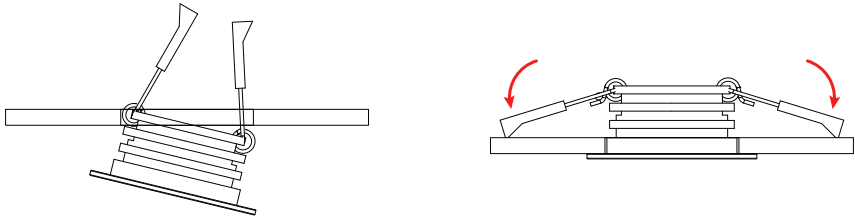
NOTE: The Lumishore Lux Downlight DL65 AG requires connection to the Lumishore Lux Downlight Module. For full electrical installation and wiring diagrams please refer to the Lum Downlight Module installation guide.

Power rating = 5.5watts per light

Typical current draw = 0.45A @ 12Volt / 0.23A @24Volt

Mechanical Installation:

Using a hole saw cut a 65mm hole, always cut the hole smaller than needed and file to the correct size to ensure a snug fit. For indoor installations use the supplied spring clips, gently pull back the spring clips and feed the light into the hole, releasing the spring clips as the light is positioned.

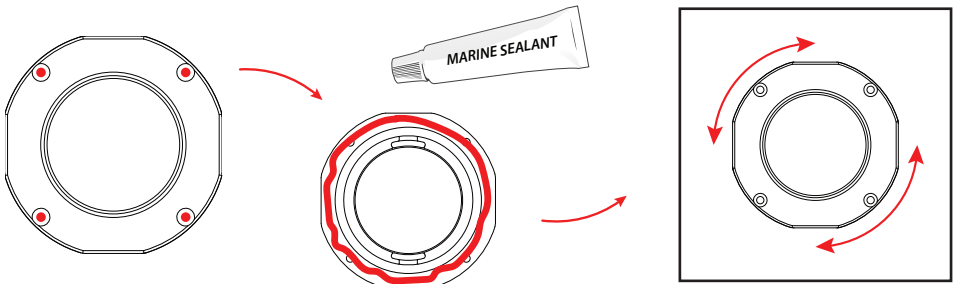


It is recommended that the light is fixed in place using a suitable marine sealant / adhesive and secured using suitable countersink screws. **Remove the spring clips** from the fixture and dispense a small amount of adhesive around the Bezel. Push into place using a slight rotation of the light to spread the adhesive evenly. Clean any excess adhesive using a soft cloth and soap and water – **DO NOT USE CHEMICAL CLEANERS**. Drill a small pilot hole in each of the mounting holes and screw into place

Drill Pilot Holes

Apply Sealant

Place & Twist



Attaching the Bezel:

Peel back the adhesive film backing layer and carefully press the bezel into place over the fixture. Note: the adhesive bezel is designed as a one time application, repeated removal may degrade the adhesive strength - Ensure fixture is clean and free of grease and dust before fitting bezel.

Warranty

LUMISHORE Ltd warrants the **LUX Downlight DL65 AG** to be free from defects in workmanship and materials for a period of two years, starting from the date of original purchase. Misuse, abuse, improper installation, neglect, improper shipping, damage caused by disasters such as fire, flood, and lightning, installation by unqualified personnel, unauthorized repair or modification will void this warranty. For the avoidance of confusion and doubt, non-compliance with all installation, maintenance and operating instructions in this document constitute non-conformance with warranty terms.

The LUX Downlights are designed to work with LUX Downlight Control Module only, DO NOT use any other lighting control module, doing so will invalidate the warranty.

