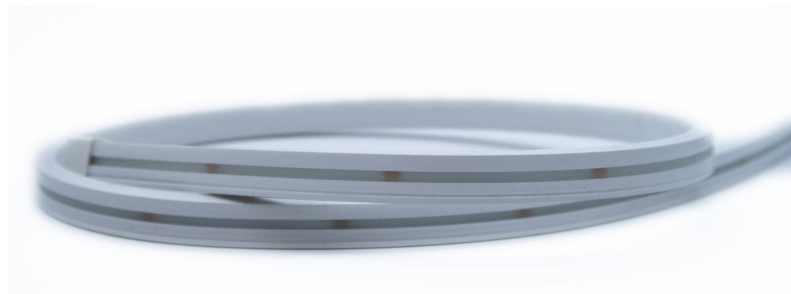




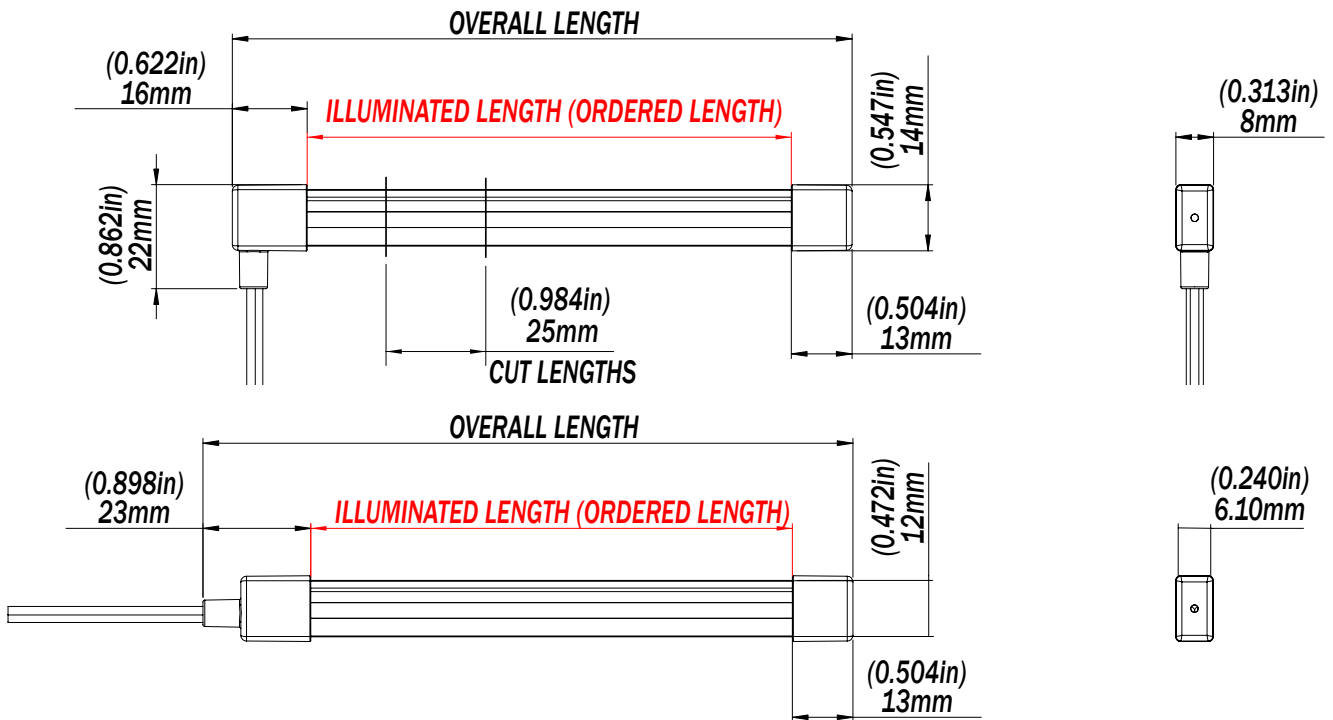
# eclipse

## ECLIPSE Neon Flex - White

# SNL100



| PART DESCRIPTION         | SNL100 ECLIPSE NEON FLEX   |
|--------------------------|--|
| Part Number              | 60-0512-1000 - ECLIPSE Neon Flex SNL100 - White (1m)<br>60-0512-2500 - ECLIPSE Neon Flex SNL100 - White (2.5m)<br>60-0512-5000 - ECLIPSE Neon Flex SNL100 - White (5m) |
| Available Colors         | White (5000 K)   |
| LED Type/Density         | 60 White LEDs Per Meter  |
| Warranty                 | 3 Years  |
| Customer Control Options | On/Off Switch<br>ECLIPSE Command Center  |
| Mechanical Installation  | Cut to Length (Seal before Installation)<br>Bottom or Side Cable Entry Option (Fit and Seal Before Installation)   |
| Electrical Installation  | Simple 2 Wire Installation   |



EMEA: [Info@Lumishore.com](mailto:Info@Lumishore.com) | USA: [Sales@LumishoreUSA.com](mailto:Sales@LumishoreUSA.com)

Units 11 & 12, Ashmount Business Park, Upper Fforest Way, Swansea, SA6 8QR | 7137 24th Court East, Sarasota, FL 34243, USA

**ECLIPSE - White**  
**SNL100**

NEON FLEX STRIP LIGHT



**TECHNICAL**

|                                     |                           |
|-------------------------------------|---------------------------|
| Supply Voltage Range                | 12V DC Only (10 - 15V DC) |
| Max Current Draw Per Meter (12V DC) | 0.5A/m (6W/m)             |

**PHYSICAL**

|                           |   |
|---------------------------|---|
| Ingress Protection        | IP68  |
| Illuminated Cross Section | 12.0mm x 6.1mm (0.433" x 0.240")  |
| End Cap Dimensions        | 14.0mm x 8.0mm (0.551" x 0.314")  |
| Lengths Available         | 1m, 2.5m and 5m<br>39", 98" and 196"<br>(Cut and Seal)  |
| Construction              | Fully Encapsulated and Potted<br>Spot Free Diffuser   |
| Mechanical Installation   | Cut to Length and Seal before Install.<br>Cut in 25mm Steps.<br>Stainless Steel Screw Clips for Mounting. |
| Weight Per M (yd)         | 86g (3 oz)  |
| UV Resistant              | Yes   |
| Salt Spray Tested         | Yes   |
| Installation Location     | Outdoor / Partially Covered Areas /<br>Indoor   |

**ACCESSORIES**

|                                |         |
|--------------------------------|---------|
| ECLIPSE Command Center         | 60-0495 |
| Expansion Module (Single Zone) | 60-0496 |
| Expansion Module (Double Zone) | 60-0497 |
| Stainless Steel Clips          | 60-0514 |

**LIGHTING SYSTEM FUNCTIONALITY (ON/OFF SWITCH)**

|                 |     |
|-----------------|-----|
| On/Off Control  | Yes |
| Dimming Control | No  |

**LIGHTING SYSTEM FUNCTIONALITY (ECLIPSE COMMAND CENTER)**

*From Smart Device/MFD:*

|                 |     |
|-----------------|-----|
| On/Off Control  | Yes |
| Dimming Control | Yes |
| Zone Control    | Yes |

*From Momentary Switch (Optional):*

|                 |     |
|-----------------|-----|
| On/Off Control  | Yes |
| Dimming Control | Yes |