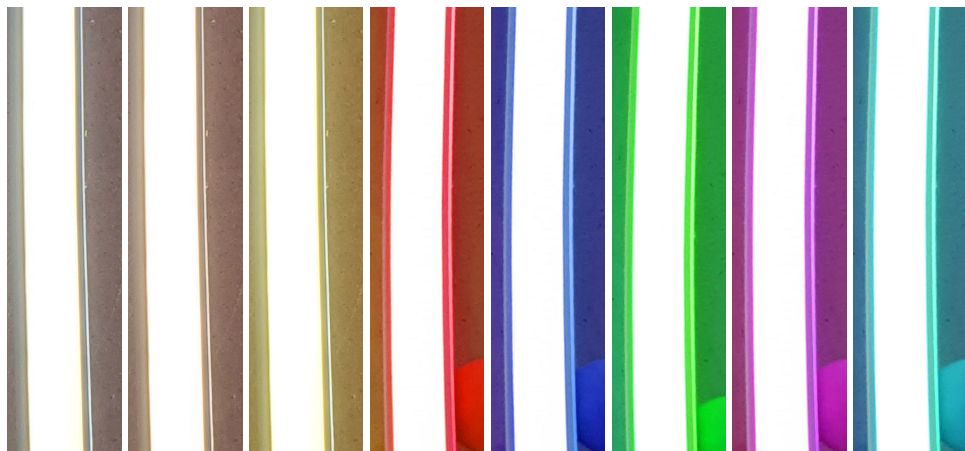


# LUX SNL180 IP68 Neon Flex Strip Light Installation Guide

Full spectrum color tunable lighting, including cold and warm white light

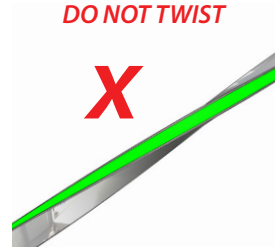
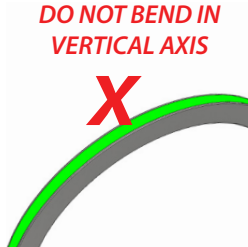
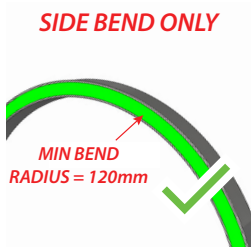
*Please read the following pages before attempting installation to ensure complete understanding of the LUMISHORE Neon Flex Strip Lights*



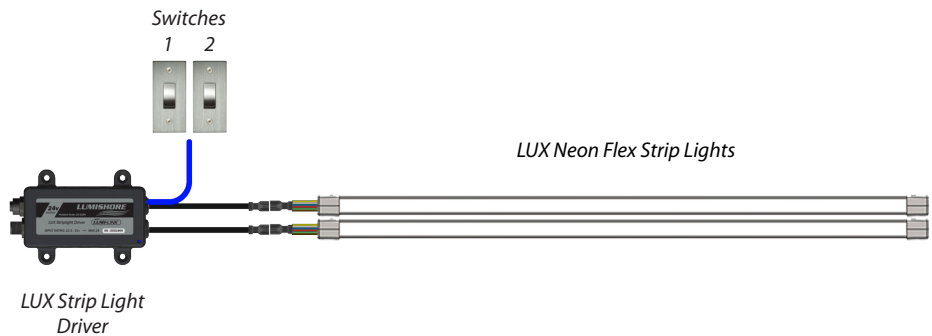
## Before you start...

- Always ensure that the vessel's power source and battery are disconnected or isolated prior to installation.
- A qualified professional should carry out both the electrical and mechanical installation.
- The LUX Neon Flex Strip Light is designed to be used in conjunction with the Lumishore LUX Neon Flex Strip Light Driver modules (see diagram below). Do not connect to any other 3rd party lighting control products or drivers.
- The LUX Neon Flex Strip Light is fully sealed and can be installed inside or outside, it can be installed in wet areas but is not designed to be permanently submerged in water.
- Choose a location – the Neon Flex Strip Light is made from UV resistant material but should not be installed in areas of strong direct sunlight.
- The Neon Flex Strip Light has a bend radius of 120mm, do not bend in the vertical axis or twist the Neon Flex Strip Light.
- The Neon Flex Strip Light is delivered in premade lengths that are factory sealed to meet IP68 standards - ***DO NOT CUT NEON FLEX STRIP LIGHT.***

**Handling & Manipulating :**



**Installation Diagram:**



NOTE : The Lumishore LUX Neon Flex Strip Lights requires connection to the Lumishore LUX Strip Light Driver Module. For full electrical installation and wiring diagrams please refer to the LUX Strip Light Driver Installation Manual (45-0143).

Power Rating = 5 watts Per Meter

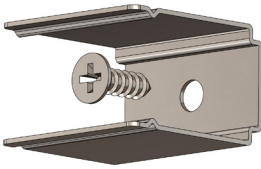
Voltage Input Range = 23 - 25V\*

**\*ONLY USE WITH LUMISHORE STRIP LIGHT DRIVER MODULES**

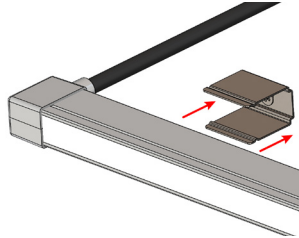
**Installation :**

The Neon Flex strip is installed using the supplied stainless steel clips. The clips are screwed in place, ensure that suitable screws are used to allow for full engagement of clip onto the strip. Once clips are installed the neon flex strip simply pushes in place where a noticeable 'Click' confirms strip is secure. It is recommended for several clips to be used around tight bends to ensure strip conforms well and to avoid lifting.

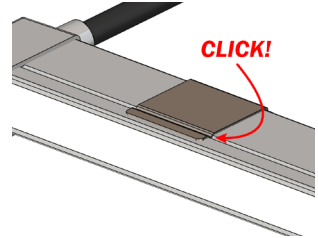
*FIX METAL CLIPS USING  
SUITABLE SCREWS*



*ALIGN WITH CLIP  
AND PUSH IN PLACE*



*ENSURE STRIP IS  
SEATED PROPERLY*

**Warranty :**

LUMISHORE Ltd warrants the **LUX Neon Flex Strip Light** to be free from defects in workmanship and materials for a period of two years, starting from the date of original purchase. Misuse, abuse, improper installation, neglect, improper shipping, damage caused by disasters such as fire, flood, and lightning, installation by unqualified personnel, unauthorized repair or modification will void this warranty. For the avoidance of confusion and doubt, non-compliance with all installation, maintenance and operating instructions in this document constitute non-conformance with warranty terms.

The **LUX Neon Flex Strip Light** is designed to work with Lumishore **LUX Strip Light Driver Module ONLY**, do not use with other 3rd party drivers, this will invalidate the warranty.

# **LUMISHORE**

***LUMISHORE***

The logo consists of the word "LUMISHORE" in a bold, italicized, sans-serif font. Below the text are three horizontal, wavy lines that sweep from left to right, creating a sense of motion or water.